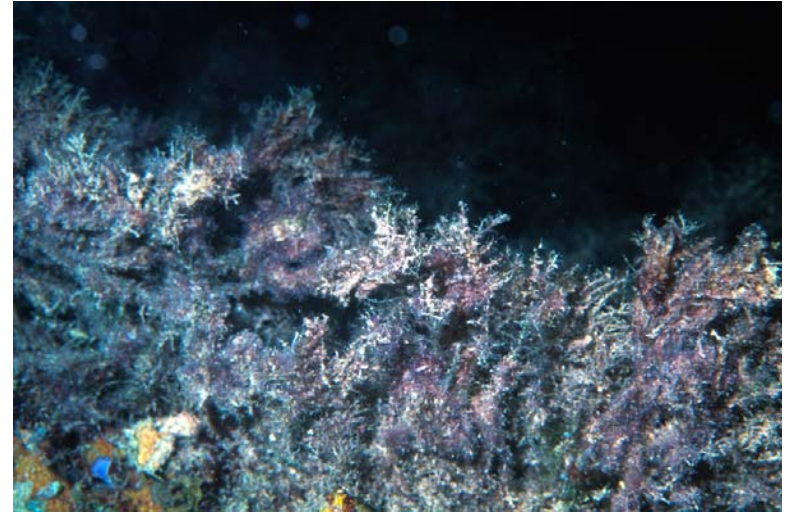


Invasive Marine Species: Hydroid (*Eudendrium carneum*)

DESCRIPTION: Hydroids (Class Hydrozoans) are colonial animals, which typically resemble large, bushy and fern-like plants or algae. *Eudendrium carneum* is a rapidly growing species which prefers rocky bottom substrates with high currents. It often forms a tangle of branches that tends to accumulate sediment, making it a fairly unattractive “weed”.

THREAT: As with any marine invasive species, *E. carneum* has the potential to spread throughout the marine environments (e.g. rocky bottoms) of Palau. *E. carneum* could potentially interfere with the feeding of bottom grazers, such as parrotfishes and surgeonfishes, which scrape algae from rock surfaces. In addition the masses of *E. carneum* tend to make rocky surfaces on the reef less visible and the reef look “dirty”.



CURRENT STATUS: At present, the current knowledge on the status and distribution of *Eudendrium carneum* in Palau is very limited. It has been found growing in at least three channels (i.e. KB, Lighthouse, and Ngel Channels) of Palau. It would be useful to survey the extent of its distribution at regular intervals.

WHAT YOU CAN DO: Until the potential impact of the hydroid has been assessed, no action is recommended. However, if you see this hydroid, please note the location and report it to Andrew Bauman at OERC (488-8681).

